

PATHS OF LIFE

American Indians of the Southwest

The Seri 2nd-5th Grade Discovery Hunt



The Seri call themselves Comcáac, meaning People. They live along the Sea of Cortez just south of Arizona in Mexico. Look at the map at the start of the Seri exhibit and learn more about the Seri homeland.



Arizona State Museum
THE UNIVERSITY OF ARIZONA.

www.statemuseum.arizona.edu

Seri Traditional Boat



Find the case with the boat inside. The boat is the traditional boat used by the Seri to travel all along the Sea of Cortez. It is called a balsa. Do you think the balsa in the case is the size of a real one? No way! Real balsas can be up to 10-12 feet long!

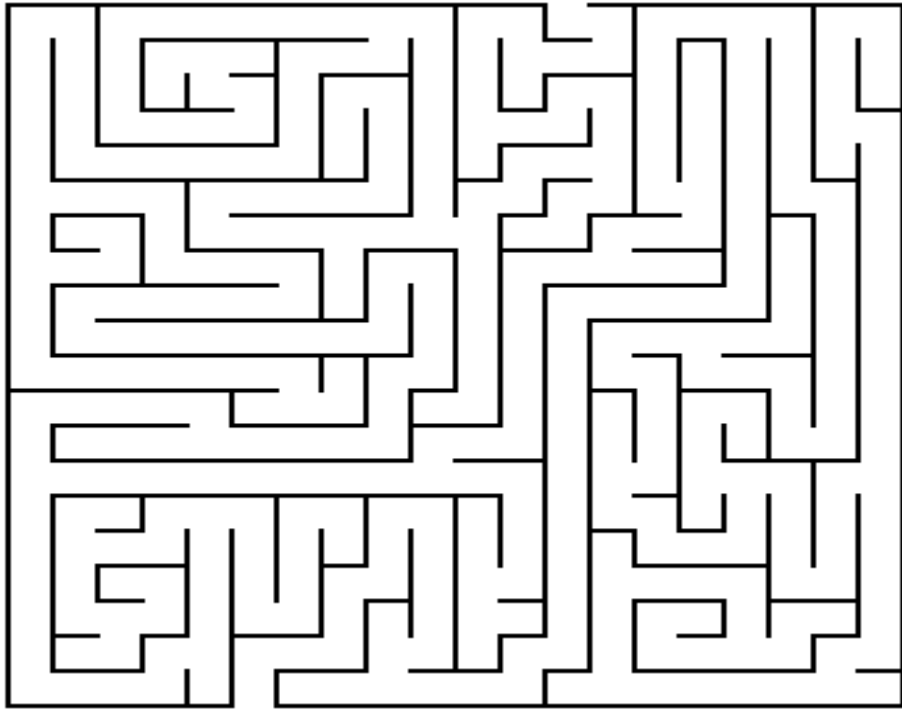
What do you think the balsa is made out of? Read the label to find out.

Now, read the Seri origin story found in the background of the case. Read it well because it will help you with the activity found below.

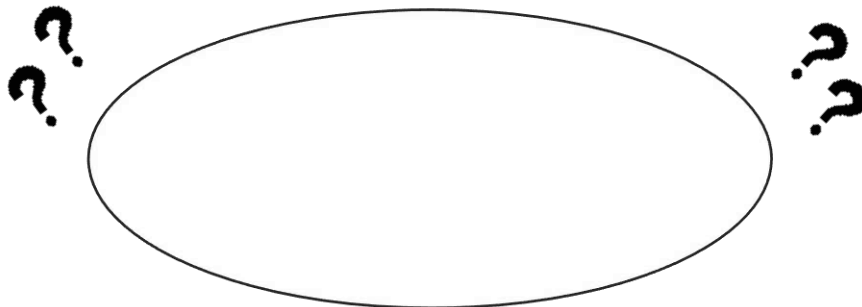
In the origin story, what sea animal did the first Seri man catch? Draw that sea animal in the oval below the maze. Then, help the Seri man catch this sea animal by solving the maze!



Start Here



Finish!



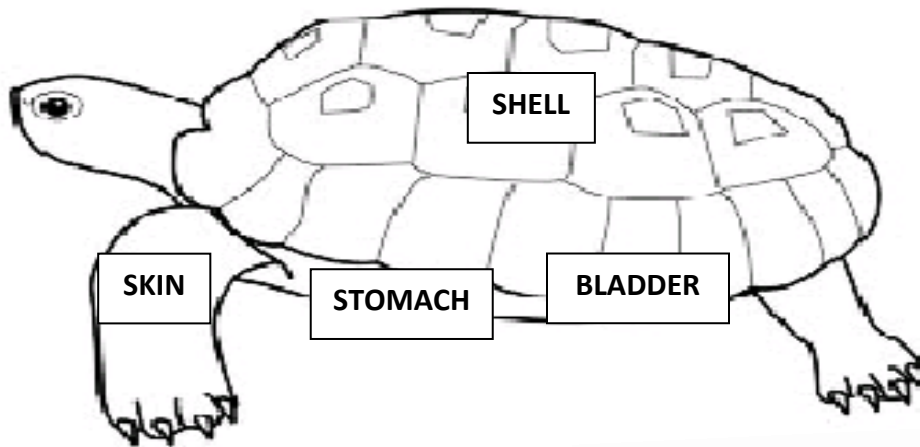
How Do the Seri Use Sea Turtles?



Walk over to the next case called "Living with the Sea." The Seri use sea animals and plants, such as pelicans, green sea turtles, and sea grasses to make food, tools and other things they need. (They can also go to stores to get food, clothing, etc.)

Look closely into the case and find 4 objects made from sea turtles. You will probably need to read the labels to help you figure out what objects are made from sea turtles.

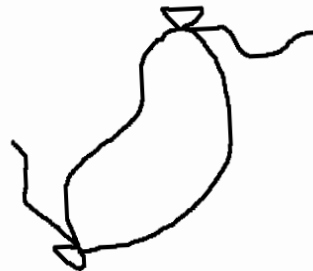
Look at the objects below the drawing of the sea turtle. Match the objects to the parts of the turtle they are made from by drawing a line from the object to that body part.



SMALL WATER BAG



SANDALS



LARGE WATER BAG



RINGS

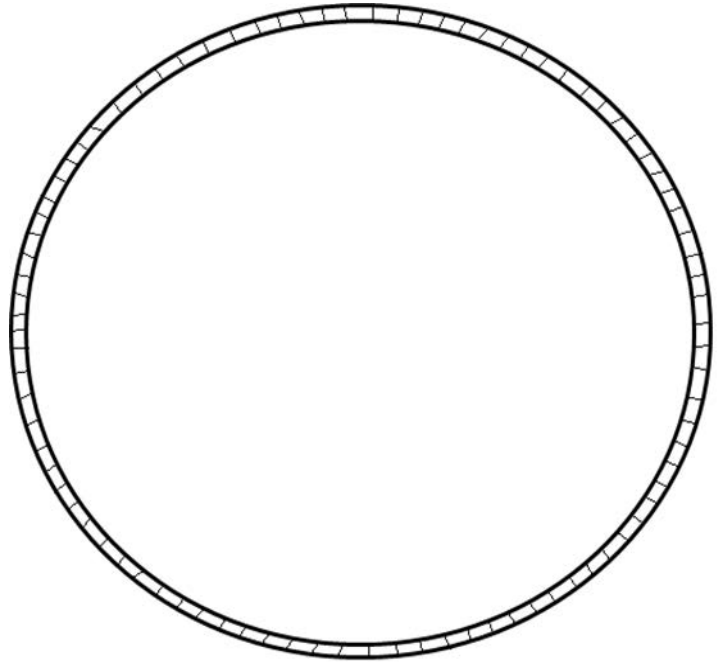
Seri Baskets

Look at the objects in the case called "Living with the Desert."

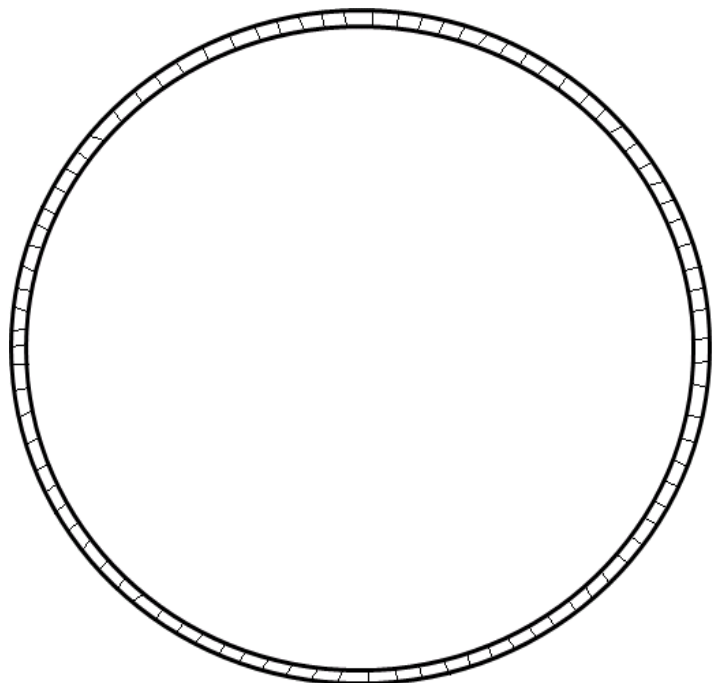
Read the labels to learn about the many different desert plants and animals that were used by the Seri to make all sorts of different things! Are any of the plants and animals familiar to you?

Next, take a look at the huge, round basket in the left part of the case. Can you see two different designs in it? Notice that one design looks like something from the desert and the other design looks like something from the sea. What are they supposed to be?

Drawn below is the outline of a basket. Inside the outline, draw the two different designs that you see in the Seri basket that is in the left part of the case.



Next, design your own basket! Draw something from the sea and something from the desert.



The Desert and the Sea



Walk over to the last two cases that show Seri jewelry and wood carvings. The jewelry is made out of different plants and animals from the desert and sea. Can you tell what they are made out of? (Reading the labels will help!) Which is your favorite piece of jewelry and what is it made out of?

Now, look at the case that contains the wood carvings. The Seri carve the wood into the shapes of animals that they see in the desert and in the sea. They use wood from the ironwood tree. It is called "ironwood" because it is a very heavy, dense wood.

Look at the ironwood carvings below. They are of all sorts of different animals. Draw a line from the animal to the place where it lives – the Desert or the Sea.

